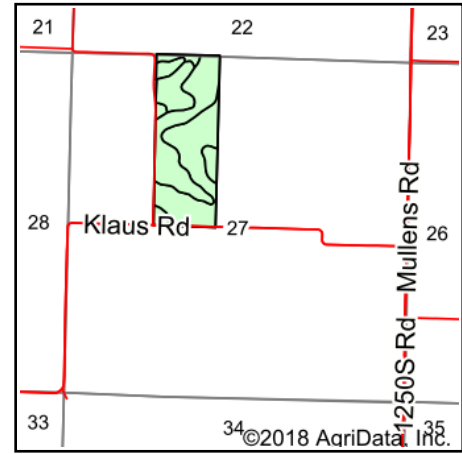
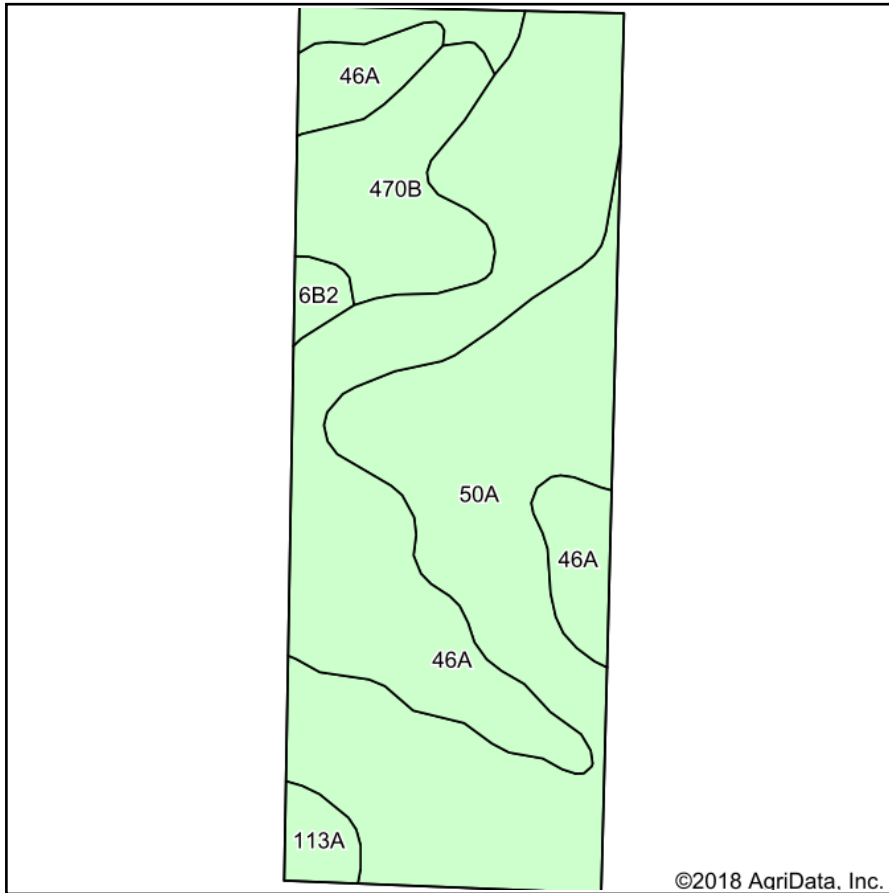


Soils Map



State: **Illinois**
 County: **Macoupin**
 Location: **27-11N-6W**
 Township: **Nilwood**
 Acres: **60.2**
 Date: **9/13/2018**



Soils data provided by USDA and NRCS.

Area Symbol: IL117, Soil Area Version: 12

Code	Soil Description	Acres	Percent of field	Il. State Productivity Index Legend	Subsoil rooting ^a	Corn Bu/A	Soybeans Bu/A	Wheat Bu/A	Oats Bu/A ^b	Sorghum ^c Bu/A	Alfalfa ^d hay, T/A	Grass-legume ^e hay, T/A	Crop productivity index for optimum management
50A	Virden silty clay loam, 0 to 2 percent slopes	26.48	44.0%		FAV	182	59	71	93	0	0.00	5.27	135
46A	Herrick silt loam, 0 to 2 percent slopes	24.64	40.9%		FAV	181	58	73	94	0	0.00	5.52	133
**470B	Keller silt loam, 2 to 5 percent slopes	7.00	11.6%		UNF	**150	**50	**60	**64	0	0.00	**4.59	**113
113A	Oconee silt loam, 0 to 2 percent slopes	1.31	2.2%		FAV	164	50	63	0	119	0.00	5.27	119
**6B2	Fishhook silt loam, 2 to 5 percent slopes, eroded	0.77	1.3%		UNF	**123	**39	**47	**59	0	0.00	**3.62	**90
Weighted Average						176.7	57.1	70.1	87.6	2.6	0.00	5.27	130.7

Table: Optimum Crop Productivity Ratings for Illinois Soil by K.R. Olson and J.M. Lang, Office of Research, ACES, University of Illinois at Champaign-Urbana. Version: 1/2/2012 Amended Table S2 B811

Crop yields and productivity indices for optimum management (B811) are maintained at the following NRES web site: <http://soilproductivity.nres.illinois.edu/>

** Indexes adjusted for slope and erosion according to Bulletin 811 Table S3

^a UNF = unfavorable; FAV = favorable

^b Soils in the southern region were not rated for oats and are shown with a zero "0".

^c Soils in the northern region or in both regions were not rated for grain sorghum and are shown with a zero "0".

^d Soils in the poorly drained group were not rated for alfalfa and are shown with a zero "0".

^e Soils in the well drained group were not rated for grass-legume and are shown with a zero "0".

*c: Using Capabilities Class Dominant Condition Aggregation Method

Soils data provided by USDA and NRCS. Soils data provided by University of Illinois at Champaign-Urbana.